



POOLE HARBOUR COMMISSIONERS
LOCAL NOTICE TO MARINERS
POOLE HARBOUR

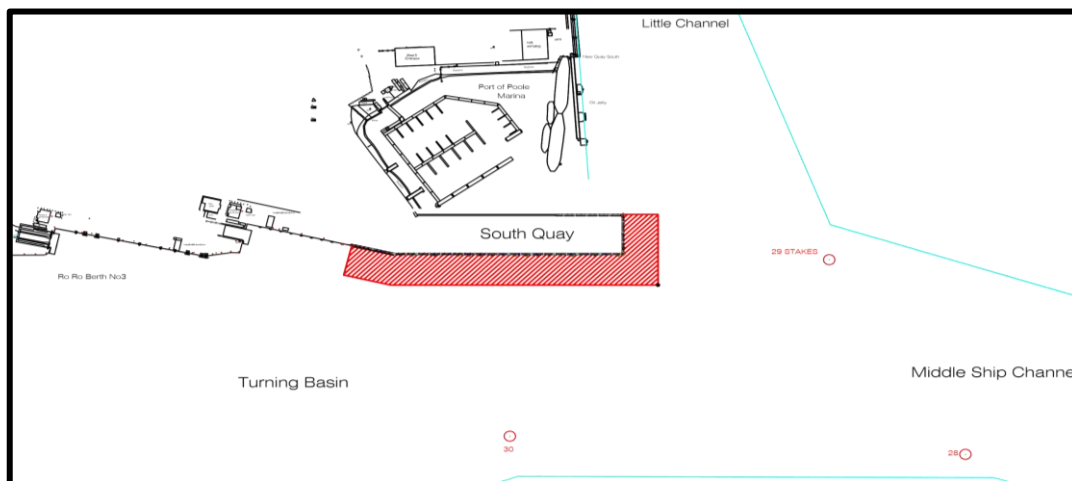
No. 30/2017

20th September 2017

South Quay Development
DREDGING

Mariners are requested to keep clear of the South Quay development, in the area shown in red below. Both marine and shore based construction plant will be operating from the edge of South Quay, dredging sand stockpiled on the harbour bed.

- This operational zone extends up to 40m from the quay edge.
- All vessels, not associated with the works, are excluded from the operational zone. Shown in red on the drawing below.
- Vessels must keep a safe distance from these operations which will be ongoing for a period of one month.
- Mariners should navigate this area with extreme caution passing at slow speed and with minimum wash.



Mariners are reminded that Radar, AIS, CCTV, telephone and VHF Channels are all recorded.

CAPTAIN BRIAN MURPHY
HARBOUR MASTER

ALL LOCAL NOTICES TO MARINERS ARE AVAILABLE ON THE PHC WEBSITE: www.phc.co.uk

HARBOUR OFFICE - 20 New Quay Road, Hamworthy, Poole, Dorset, BH15 4AF
Telephone: (01202) 440210 Fax: (01202) 440231 e-mail:harbourmaster@phc.co.uk