



**POOLE HARBOUR COMMISSIONERS**  
**LOCAL NOTICE TO MARINERS**  
**POOLE HARBOUR**

No. 18/2017

14<sup>th</sup> May 2017

**MILITARY PARACHUTING**

Mariners are advised that Military Parachute Training may take place at the following date and times:

<b>Date:</b>	<b>Time:</b>
Wednesday 14 June	1000-1900
Thursday 15 June	1000-1900
Friday 16 June	1000-1900
Monday 19 June	1000-1900
Tuesday 20 May	1000-1900
Wednesday 21 June	1000-1900
Thursday 22 June	1000-1900
Friday 23 June	1000-1900

<b>Position:</b>	Lat: 50° 38.990'N	Long: 001° 56.100'W	(See Chartlet No.1)
	Lat: 50° 39.742'N	Long: 001° 52.624'W	(See Chartlet No.2)
	Lat: 50° 40.500'N	Long: 001° 54.410'W	(See Chartlet No.2)

These positions have **voluntary** exclusion / safety zones of 1000 yard radius and mariners are advised where practicable to keep clear during training times.

For the safety of both mariners and parachutist, safety boats will be operating to offer advice and information to anyone who may require it.

For more information please contact Poole Harbour Control on VHF channel 14.

This notice will self-cancel on 1<sup>st</sup> July 2017.

**Mariners are reminded that Radar, AIS, CCTV, telephone and VHF channels are recorded.**

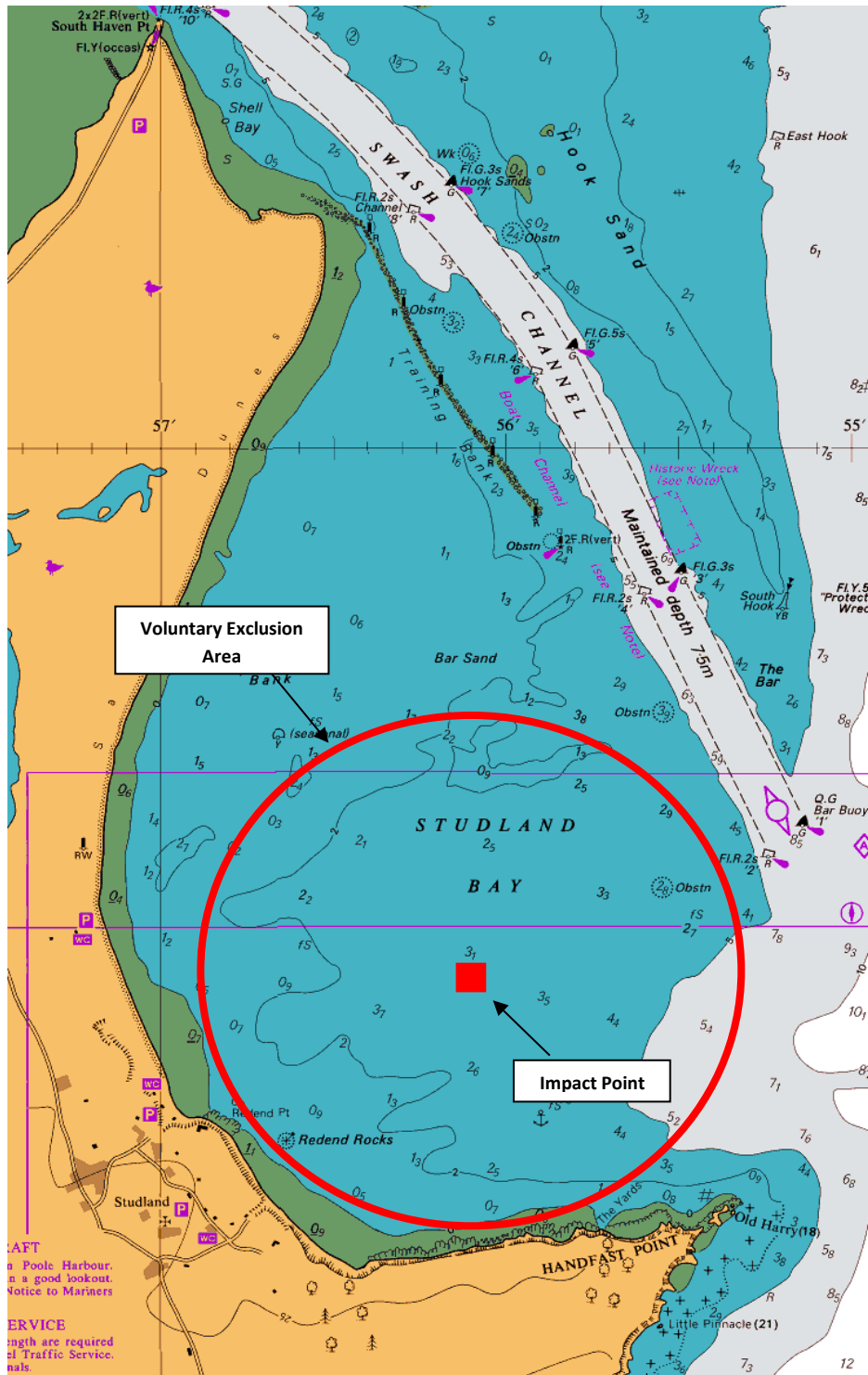
**Captain B P Murphy**  
**Harbour Master**

ALL LOCAL NOTICES TO MARINERS ARE AVAILABLE ON THE PHC WEBSITE: [www.phc.co.uk](http://www.phc.co.uk)

HARBOUR OFFICE - 20 New Quay Road, Hamworthy, Poole, Dorset, BH15 4AF  
Telephone: (01202) 440210 Fax: (01202) 440231 e-mail:harbourmaster@phc.co.uk

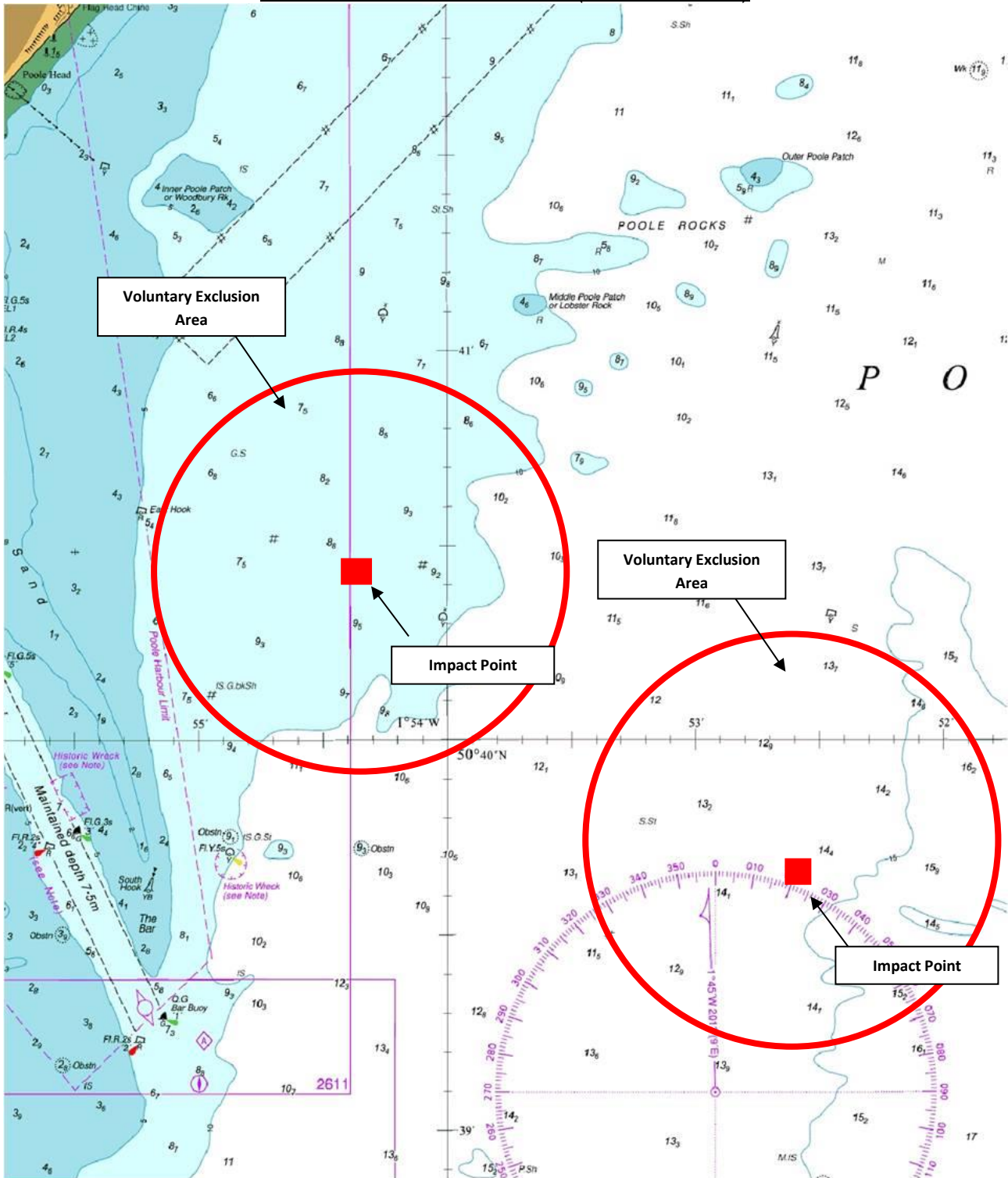
**POOLE HARBOUR COMMISSIONERS**  
**LOCAL NOTICE TO MARINERS**  
**POOLE HARBOUR**

**STUDLAND BAY DROP ZONE (Chartlet No. 1)**



**POOLE HARBOUR COMMISSIONERS**  
**LOCAL NOTICE TO MARINERS**  
**POOLE HARBOUR**

**POOLE BAY DROP ZONE (Chartlet No. 2)**



**Note: Drawings are not to scale and all positions are approximate.**