

POOLE HARBOUR COMMISSIONERS
LOCAL NOTICE TO MARINERS
POOLE HARBOUR

No. 34/2016

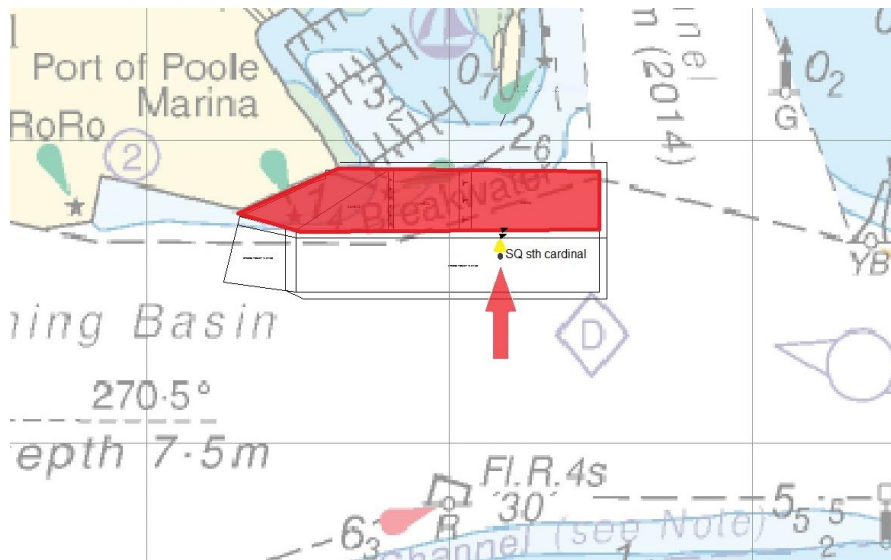
25th November 2016

Port of Poole - South Quay Development

Mariners are requested to keep clear of the red area shown below. The seabed in this area is being built up, to a level approximately 2m below Chart Datum (CD), in preparation for the piling phase of the South Quay development.

The South Cardinal buoy (Q(6)+LFl.15s) in position 50° 42.429' N 001° 59.205' W marks the Southern extremity of shoaling and a 1.3m (below CD) patch which lies directly to the North.

The perimeter of the area will be marked by an additional five Special Marks (Fl.Y 5s) when the dredger completes the stockpiling of sand. This will be for a period of approximately 3 months.



The dredger 'Trud R' will continue to work a 24/7 operation for approximately two weeks. She will show the lights and shapes as required by the INTERNATIONAL REGULATIONS FOR PREVENTING COLLISIONS AT SEA, 1972 (as amended), and keep a listening watch on VHF channel 14.

Mariners are reminded that Radar, AIS, CCTV, telephone and VHF channels are recorded.

Captain B P Murphy
Harbour Master

ALL LOCAL NOTICES TO MARINERS ARE AVAILABLE ON THE PHC WEBSITE: www.phc.co.uk

HARBOUR OFFICE - 20 New Quay Road, Hamworthy, Poole, Dorset, BH15 4AF
Telephone: (01202) 440210 Fax: (01202) 440231 e-mail:harbourmaster@phc.co.uk