



POOLE HARBOUR COMMISSIONERS
LOCAL NOTICE TO MARINERS
POOLE HARBOUR

No. 45/2012

8th October 2012

WATER-SKIING IN POOLE HARBOUR

Information from recreational surveys continually highlights the need to maintain designated areas for certain water sports, where their activity can be carried out with the minimum of disturbance to wildlife and other users. The use of these zones assists in the reduction of disturbance to ecologically sensitive areas and in minimising the dangers associated with the mixing of powered and non-powered craft. Since its introduction in 1995 the zoning scheme has proved very successful in managing the multifarious recreational activities within the Harbour and the majority of users are now aware of, and restrict their activities to, the relevant areas.

Water-skiing and wakeboarding may only take place in the designated area to the North of the Arne peninsular within the area marked by yellow buoys. (See chartlet)

Vessels engaged in these activities are exempt from the speed limit in the area, other vessels are not.

The Poole Harbour byelaw 2(e) states:

Within the limits of Poole Harbour no person shall engage or take part in Water-skiing, ascending by towed kite or parachute or the use of a jet ski or hovercraft, except with the written permission of the Harbour Master, given either specifically, or generally, and only in such areas as have been designated and in accordance with such reasonable conditions and subject to such directions as may be imposed or given.

The purchase of a water-ski permit satisfies that part of the bylaw which requires the written permission of the Harbour Master. Please note that the vessel must also be in possession of valid Harbour Dues. Permits and Harbour Dues are obtainable on-line from our website, from the Harbour Office or Poole Quay Boat Haven.

Water-skiers are reminded that the Wareham channel runs through their designated area, boats transiting the channel are not exempt from the speed limit and will be travelling at substantially lower speeds. Take special care to avoid close quarter situations.

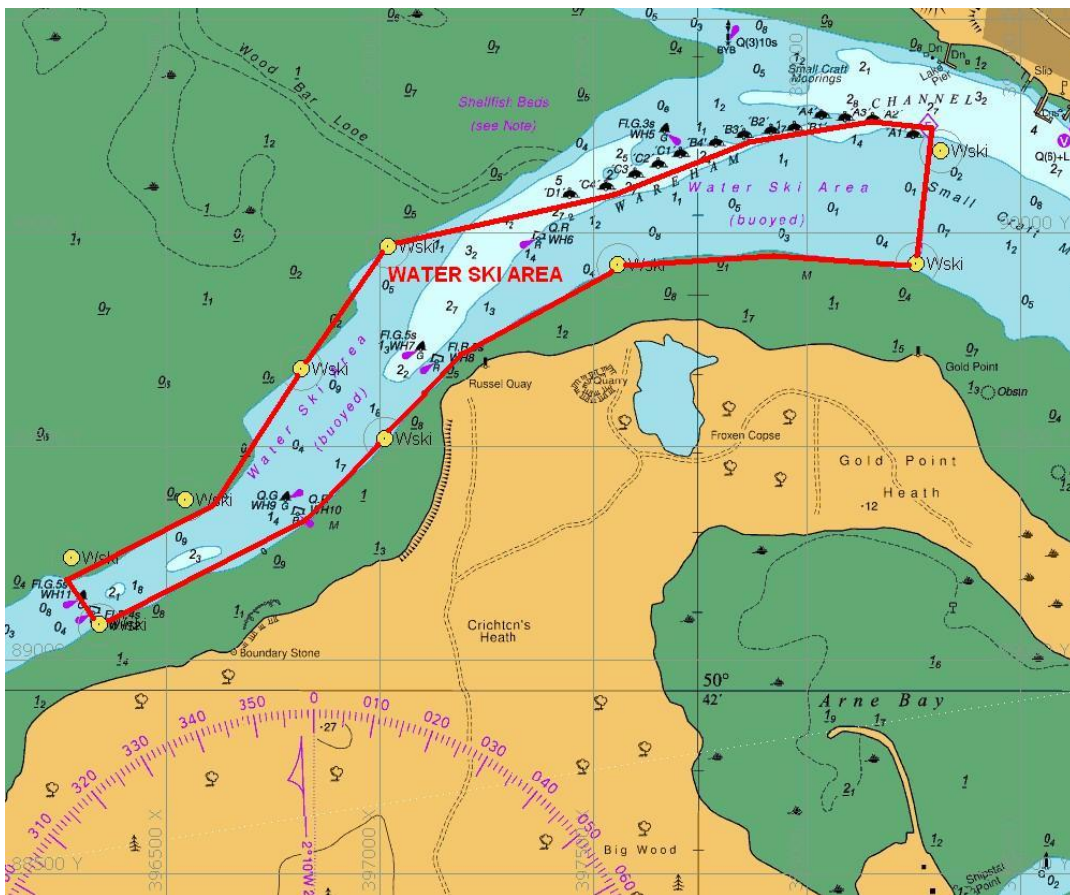
While carrying out these activities, the following conditions will apply:

- The vessel must have a name which is clearly identifiable from outboard.
- Owners of vessels must be covered by insurance for third party risks, including water-skiing.
- There must be a minimum of two persons in the boat at any time while towing a skier, one of whom to act as a lookout astern.



POOLE HARBOUR COMMISSIONERS
LOCAL NOTICE TO MARINERS
POOLE HARBOUR

- Ski boats must navigate around the designated area in an ant-clockwise direction.
- Water-skiing/wakeboarding is permitted only from sunrise to sunset.
- Towed inflatables are not allowed anywhere within the PHC's area of jurisdiction.
- The Harbour Master may order the withdrawal of a permit without refund for an infringement of these conditions.
- Serious or persistent offences may lead to prosecution under the Poole Harbour byelaws.



Mariners are reminded that Radar, AIS, CCTV, telephone and VHF channels are recorded.

Captain B P Murphy
Harbour Master

ALL LOCAL NOTICES TO MARINERS ARE AVAILABLE ON THE PHC WEBSITE: www.phc.co.uk

HARBOUR OFFICE - 20 New Quay Road, Hamworthy, Poole, Dorset, BH15 4AF
Telephone: (01202) 440210 Fax: (01202) 440231 e-mail:harbourmaster@phc.co.uk