

**POOLE HARBOUR COMMISSIONERS**  
**LOCAL NOTICE TO MARINERS**  
**POOLE HARBOUR**

No. 23/2017

22<sup>nd</sup> July

**BRITISH ROWING OFFSHORE CHAMPIONSHIPS**

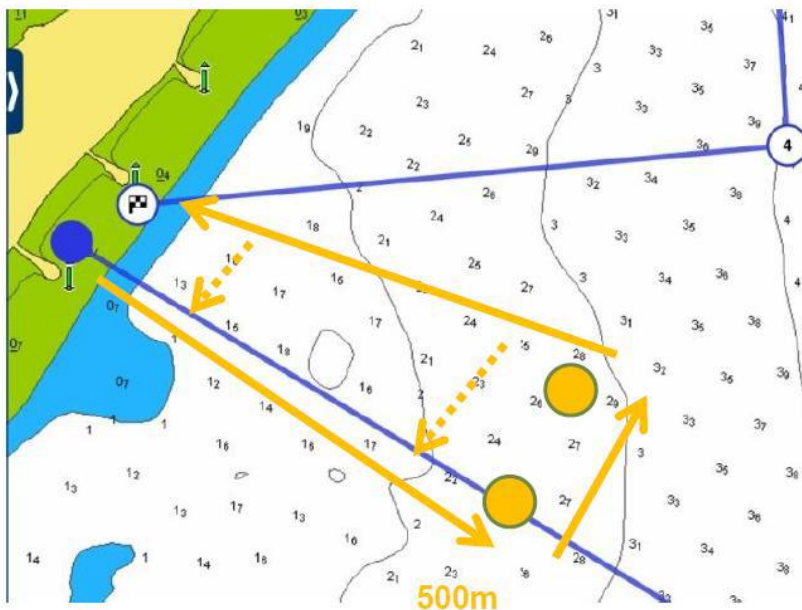
Mariners are advised that a British Rowing Offshore Development Day will take place on Saturday 29<sup>th</sup> July and an Offshore Regatta on Sunday 30<sup>th</sup> July, boats will launch from Sandbanks Beach.

The development day includes training sessions with boats being launched from the beach from 1000hrs until approximately 1600hrs.

## Saturday Training Zone



When turning back onto the main track  
give way to oncoming traffic



All boats must sign  
in and out.

There is no safety  
cover outside of the  
training zone

If you choose to go  
beyond the  
Training Zone it  
is important  
that you follow  
your club rules  
for training and  
assess the  
risks.



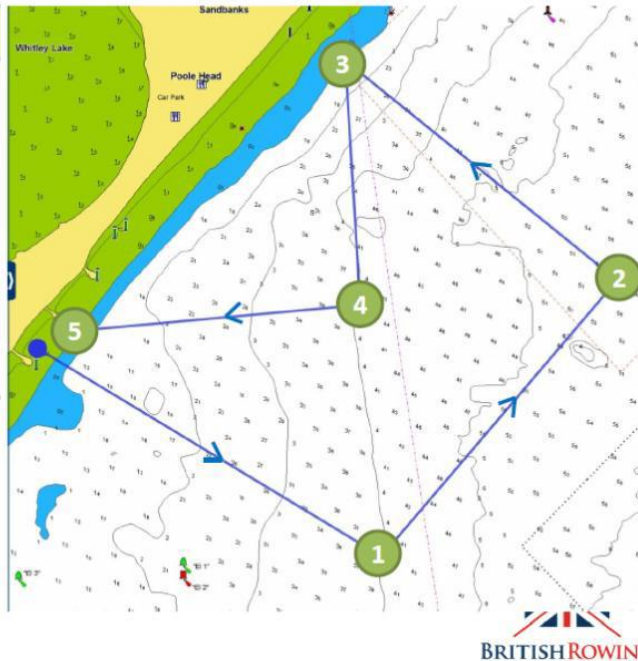
**POOLE HARBOUR COMMISSIONERS**  
**LOCAL NOTICE TO MARINERS**  
**POOLE HARBOUR**

The Sunday regatta involves races around two courses:

## Heats 4k course

Start		50°41'366 N 001°56'127 W
TP1	1.0k (1.0k)	50°41'079 N 001°55'456 W
TP2	0.9k (1.9k)	50°41'454 N 1°54'960 W
TP3	0.8k (2.7k)	50°41'735 N 001°55'506 W
TP4	0.6k (3.3k)	50°41'422 N 001°55'477 W
TP5	0.7k (4.0k)	50°41'387 N 001°56'067 W
Finish		50°41'366 N 001°56'127 W

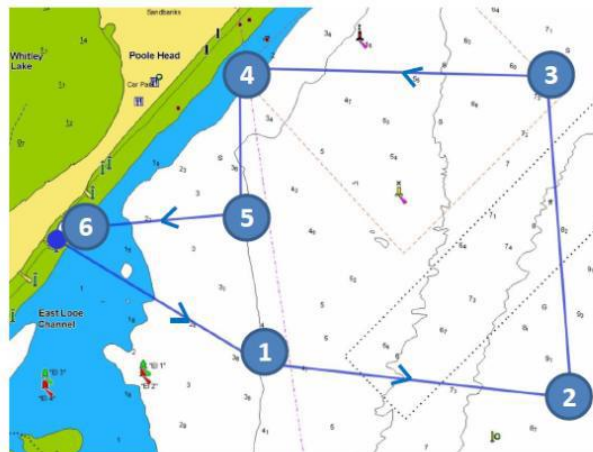
The placement of the Turning Point Markers will be in the approximate positions of the coordinates. Please use common sense and visual identification in navigating the course.



## Finals 6k course

Start		50°41'366 N 001°56'127 W
TP1	1.0k (1.0k)	50°41'079 N 001°55'456 W
TP2	01.2k (2.2k)	50°41'025 N 1°54'388 W
TP3	1.3k (3.5k)	50°41'717 N 001°54'465 W
TP4	1.2k (4.7k)	50°41'735 N 001°55'506 W
TP5	0.6k (5.3k)	50°41'422 N 001°55'477 W
TP6	0.7k (6.0k)	50°41'387 N 001°56'067 W
Finish		50°41'366 N 001°56'127 W

The placement of the Turning Point Markers will be in the approximate positions of the coordinates. Please use common sense and visual identification in navigating the course.



Racing will take place from 0600hs to approximately 1700hrs.



**POOLE HARBOUR COMMISSIONERS**  
**LOCAL NOTICE TO MARINERS**  
**POOLE HARBOUR**

**Safety boats will be in attendance throughout however mariners are requested to avoid this area if possible, or transit this area at slow speed, with minimum wash and keeping a sharp lookout.**

Contingency plans are in place in place to cover the vagaries of the English weather which include alternative landing sites and total relocation.

Further information can be obtained on the day from Poole Harbour Control, VHF ch14 or telephone 01202 440230

**Mariners are reminded that Radar, AIS, CCTV, telephone and VHF Channels are all recorded.**

**BRIAN MURPHY**  
**HARBOUR MASTER**

ALL LOCAL NOTICES TO MARINERS ARE AVAILABLE ON THE PHC WEBSITE: [www.phc.co.uk](http://www.phc.co.uk)

**HARBOUR OFFICE - 20 New Quay Road, Hamworthy, Poole, Dorset, BH15 4AF**  
**Telephone: (01202) 440210 Fax: (01202) 440231 e-mail:harbourmaster@phc.co.uk**