

POOLE HARBOUR COMMISSIONERS
LOCAL NOTICE TO MARINERS
POOLE HARBOUR

No. 06/2015

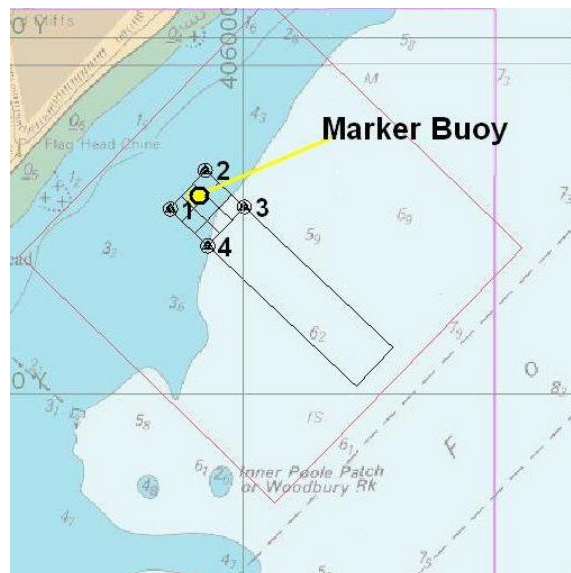
16th February 2014

SHOAL PATCH

Mariners are advised that as a result of the beach replenishment program (LNTM 3/2015 refers) a significant shoal patch exists within the exclusion zone described in the previous LNTM. (See chartlet)

The shoal is marked by an IALA Isolated Danger buoy with a Gp Fl (2) white light characteristic, in position 50° 41.794'N 001° 55.101'W.

Mariners should keep well clear of this area.



Cancel LNTM 05/2015

Cancel LNTM 03/2015 - Dredging has been completed and No. 22 buoy, Aunt Betty, has been returned to its charted position.

Mariners are reminded that Radar, AIS, CCTV, telephone and VHF channels are recorded.



Captain B P Murphy
Harbour Master

ALL LOCAL NOTICES TO MARINERS ARE AVAILABLE ON THE PHC WEBSITE: www.phc.co.uk